



94 Lion Lane, Haslemere, GU27 1JH Offers in excess of £540,000

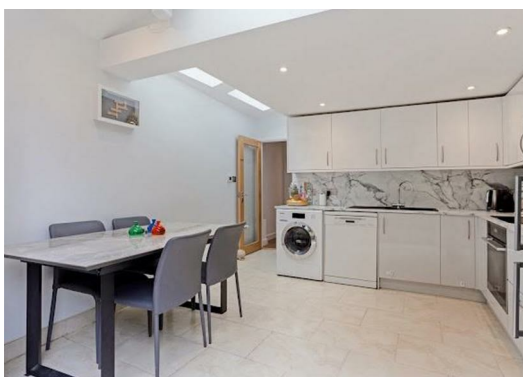
Situated in a sought-after location close to the heart of Haslemere, this charming three-bedroom semi-detached home offers beautifully proportioned accommodation arranged over three floors, combining character with practical family living.

The ground floor features a welcoming entrance hall leading to a spacious bay-fronted sitting room, providing a cosy and inviting space to relax. To the rear, a generous living room flows seamlessly into the modern kitchen/dining room, creating an ideal setting for everyday family life and entertaining guests. A convenient cloakroom completes the ground floor accommodation.

On the first floor are two well-proportioned double bedrooms and a contemporary family bathroom, while the second floor provides a further bedroom and a separate office, offering versatile space perfectly suited to home working, hobbies or occasional guest accommodation.

Externally, the property enjoys a private rear garden, providing an ideal outdoor retreat for relaxing, dining al fresco or entertaining. Conveniently located within easy reach of Haslemere town centre, highly regarded schools and excellent transport links, including the mainline station with services to London Waterloo, this attractive home is perfectly suited to families and professionals alike.

Early viewing is highly recommended to appreciate the character, space and versatility this delightful home has to offer.



Disclaimer

- 1. MONEY LAUNDERING REGULATIONS:** Intending purchasers will be asked to produce identification documentation at a later stage and we would ask for your co-operation in order that there will be no delay in agreeing the sale.
- 2. General:** While we endeavour to make our sales particulars fair, accurate and reliable, they are only a general guide to the property and, accordingly, if there is any point which is of particular importance to you, please contact the office and we will be pleased to check the position for you, especially if you are contemplating travelling some distance to view the property.
- 3. Measurements:** These approximate room sizes are only intended as general guidance. You must verify the dimensions carefully before ordering carpets or any built-in furniture.
- 4. Services:** Please note we have not tested the services or any of the equipment or appliances in this property, accordingly we strongly advise prospective buyers to commission their own survey or service reports before finalising their offer to purchase.
- 5. THESE PARTICULARS ARE ISSUED IN GOOD FAITH BUT DO NOT CONSTITUTE REPRESENTATIONS OF FACT OR FORM PART OF ANY OFFER OR CONTRACT. THE MATTERS REFERRED TO IN THESE PARTICULARS SHOULD BE INDEPENDENTLY VERIFIED BY PROSPECTIVE BUYERS OR TENANTS. NEITHER GOODMOVE NOR ANY OF ITS EMPLOYEES OR AGENTS HAS ANY AUTHORITY TO MAKE OR GIVE ANY REPRESENTATION OR WARRANTY WHATEVER IN RELATION TO THIS PROPERTY.**

